



# SUPA Stainless Steel Pull Bars

## The Square Collection



Hardware that starts with you.

# SUPA Stainless Steel Pull Bars

## The Square Collection

Square pull bars are the latest addition to Mila's SUPA stainless steel range.

The SUPA Square Collection is manufactured from high quality, marine grade 316 stainless steel. The collection is available in a brushed finish and features three contemporary designs; inline T, offset T and inline mitred.

SUPA Square pull bars are available in 1200mm lengths. A universal design means they are suitable for both left and right handed doors. Two fixing points enable quick, simple and sturdy installation.

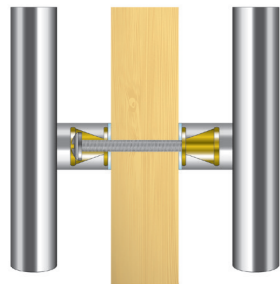
There is a choice of three fixing options to suit your door application; through fix, back-to-back fix and concealed fixed.

Matching square escutcheons are also available for a fully coordinated, contemporary SUPA square look.

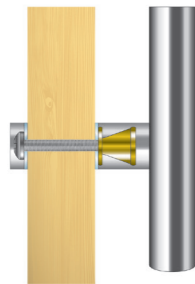


### SUPA Dupa

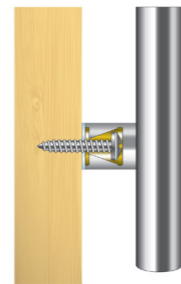
The SUPA Square pull bar range has been independently tested to BSEN 1670: 2007 Grade 5 for corrosion resistance - which Mila has tested beyond the standard to achieve 1000 hours salt spray - and is backed with a market-leading 25 year guarantee.



Back-to-back Fixing



Through Fixing



Concealed Fixing

### 3 Fixing Options

Choose a fixing kit to suit your application. Kits are sold separately. Please see part numbers overleaf.



### SUPA Suited

For a fully coordinated look, our concealed-fix SUPA Square stainless steel escutcheons are SUPA stylish and simple to fit.



Inline T



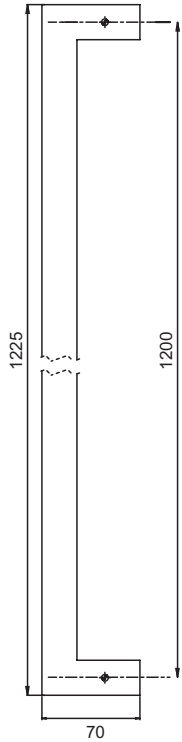
Offset T



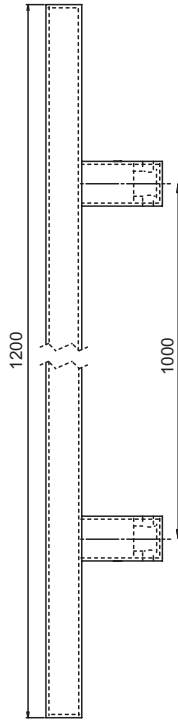
Inline mitred

3 SUPA Stainless Steel Styles  
The Square Collection

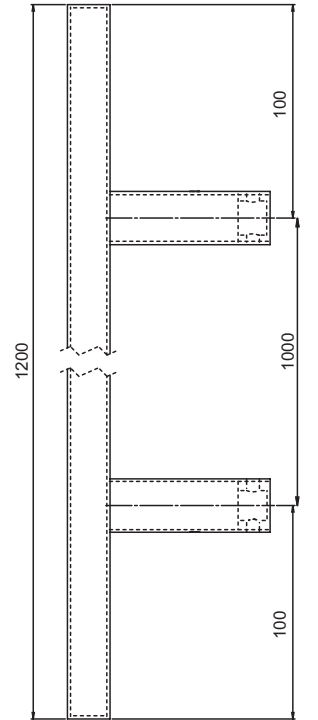
# SUPA Stainless Steel Pull Bars **The Square Collection**



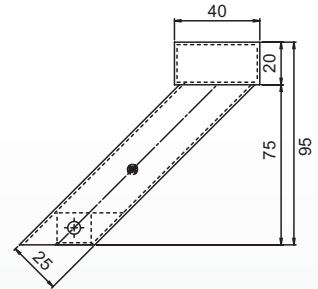
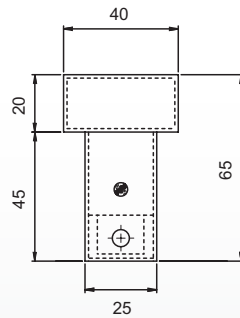
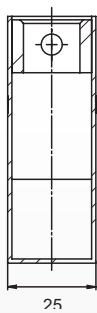
Inline Mitred



Inline T



Offset T



Description	Variant	Finish	Size	Fixing Points	Part Number
SUPA Square Pull Bar	Inline Mitred	Brushed Stainless Steel, Grade 316	1200mm	2	572102
SUPA Square Pull Bar	Inline T	Brushed Stainless Steel, Grade 316	1200mm	2	572112
SUPA Square Pull Bar	Offset T	Brushed Stainless Steel, Grade 316	1200mm	2	572122
SUPA Square Escutcheon	Universal	Brushed Stainless Steel, Grade 316			579032

Fixing Kit*	Size	Finish	Part Number
Through-fix	25mm Diameter	Brushed Stainless	573332
Through-fix	30mm Diameter	Brushed Stainless	573302
Back-to-back (for 44-46mm slab thickness)	-	-	573315
Back-to-back (for 64-76mm slab thickness)	-	-	573316
Concealed fix	-	-	573320

\*Please note that fixing kits are sold separately