

Fitting Instructions

Supa Secure Escutcheon

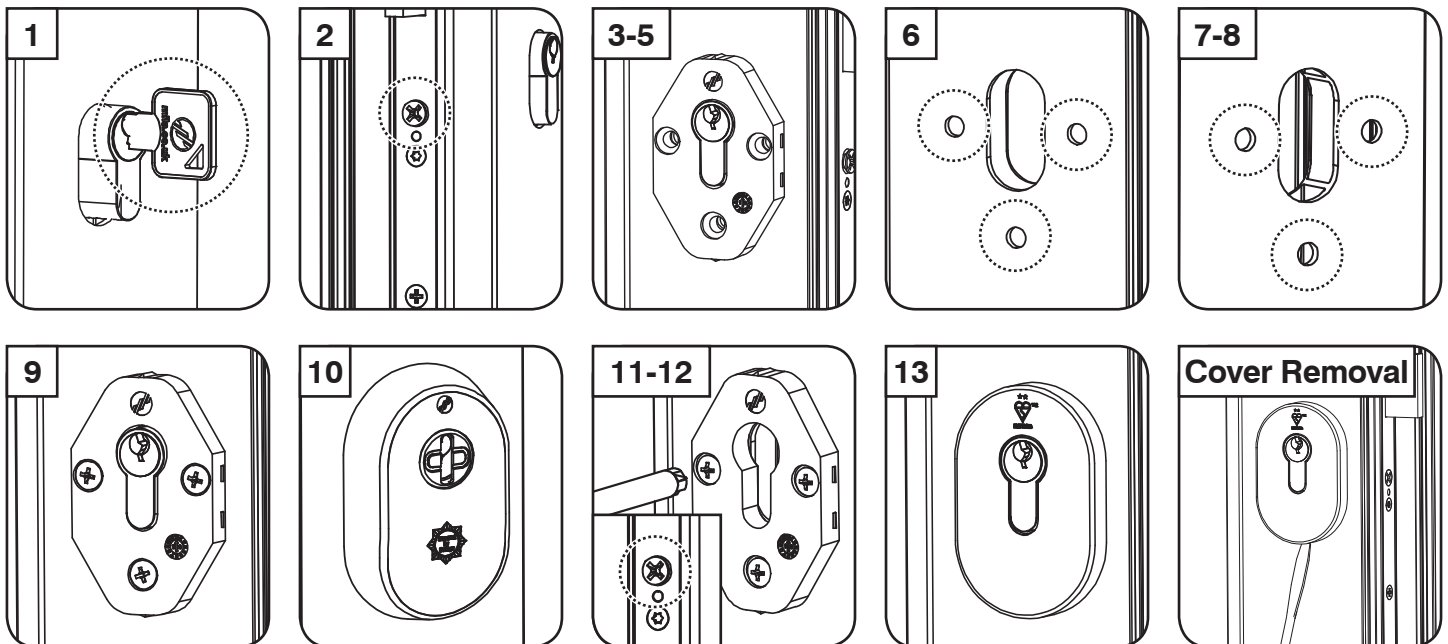
Installation Steps:

1. Check operation of cylinder - it should operate normally from both sides of the door.
2. Locate and loosen the cylinder fixing screw which is positioned on the side of the door, on the door lock face plate.
3. On the internal side of the door, position the body of the internal escutcheon over the cylinder. With a pencil carefully mark through all screw holes to the internal side of the door.
4. Repeat on external side of door.
5. Remove both the cylinder & lock from the door.
6. Carefully drill the 3 x 6mm holes as marked from the internal side of the door taking care not to drill through to external door face.
7. Repeat with the markings on the external side of the door. This should avoid any hole misalignment.
8. Re-fit the door lock and cylinder, leaving the cylinder screw loose.
9. Slide the body of the internal escutcheon over the cylinder on the internal door side, and insert the appropriate length screws.
10. On the external door side slide the external escutcheon over the cylinder, ensuring all three screws align with the screw holes on the reverse of the escutcheon.
11. Position the external escutcheon against the door and tighten the 3 screws on the internal side taking care not to overtighten.
12. Re-tighten the cylinder screw.
13. To complete installation, firmly push the internal metal cover over the black insert until you feel it click into place.

Cover Removal: Using a small blade screw driver gently insert under the cover and carefully twist to remove the cover from the escutcheon body.

NOTE: cylinders must be the correct size for the door to allow correct fitting of the external escutcheon. If your cylinder protrudes from the door by more than 14mm it will not allow correct fitting of the external escutcheon.

THESE ESCUTCHEONS ARE SUITABLE FOR SUBSTRATES RANGING FROM 44 TO 48MM IN THICKNESS.



TS007: 2014 2 Star Rating - User Information

This security hardware offers additional defence to several types of attack. However, to ensure enhanced resistance to all commonly used attack methods, this product **MUST** be used in conjunction with a one star or three star cylinder meeting TS 007 to ensure security.

The star marking will be marked on the cylinder itself. However, in the case of an already-installed cylinder, checking this may require removal of the cylinder from the door. Cylinders supplied before the availability of this specification may be marked with the BSI "Kitemark" logo without any indication of star rating. These should be accepted as equivalent to a one star cylinder under this specification.

In a cylinder lock, it is the cylinder which actually recognises the correct key and provides protection from picking and other forms of manipulation; cylinders which have been successfully tested against these forms of attack under this specification will carry 1-star. A three star cylinder offers the same protection as a one star cylinder plus protection from force attack.

Secured by Design



Police Preferred Specification



KM535608
TS007:2014
+A1 2015

Maintenance: to ensure that your product maintains its high-quality finish please; DO wipe regularly with a soft, damp cloth to remove any finger prints. We recommend that you only use warm soapy water with a lint free cloth. Wipe dry with a soft clean cloth. DON'T use abrasive cleaners or scouring pads, bleach or solvents.

ALWAYS USE APPROPRIATE PPE WHEN USING TOOLS