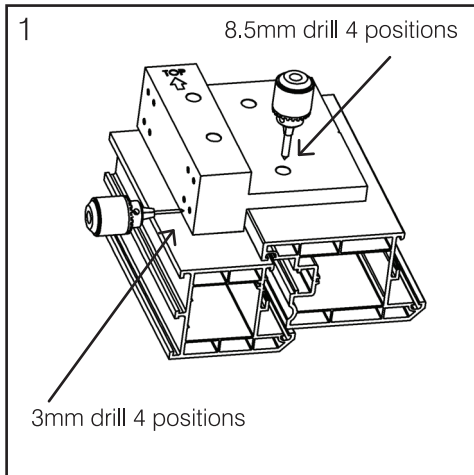


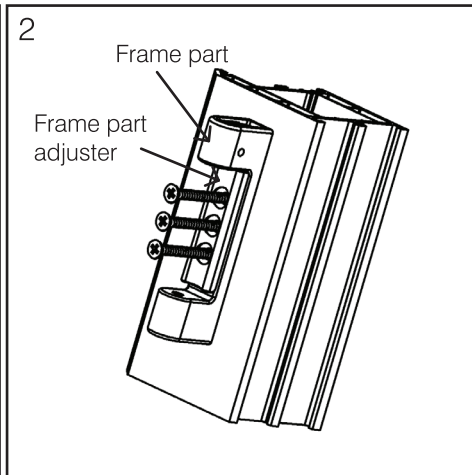
UK CA	1121-CPR-UK-AC7850	MILA, DAVENTRY, NN11 8RB. UK						14
	2812-CPR-AC5036	EN1935: 2002	1	4	3	0	1	



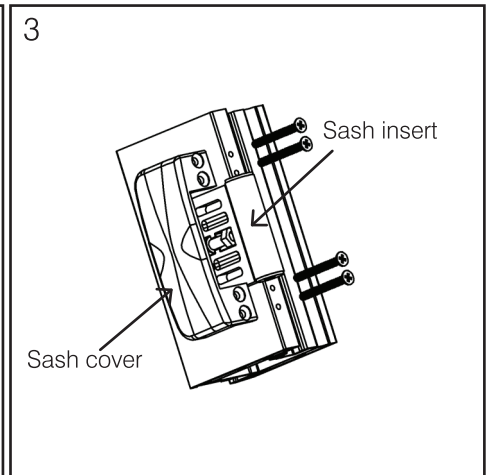
Evolution Door Hinge Fitting Instructions



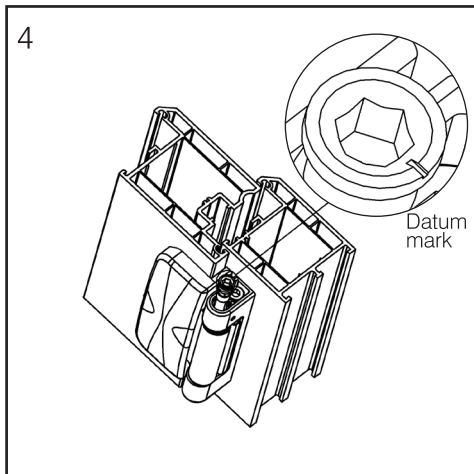
Ensure jig is orientated correctly - the top of the jig should be positioned towards the top of door, as shown above.



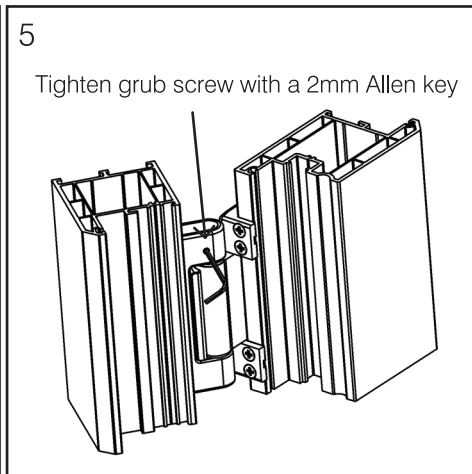
Ensure frame part adjuster is positioned to the top of the frame part as shown above. Recommended screw size is 4.2 x 42mm drill point bugle head (part no. 136630)



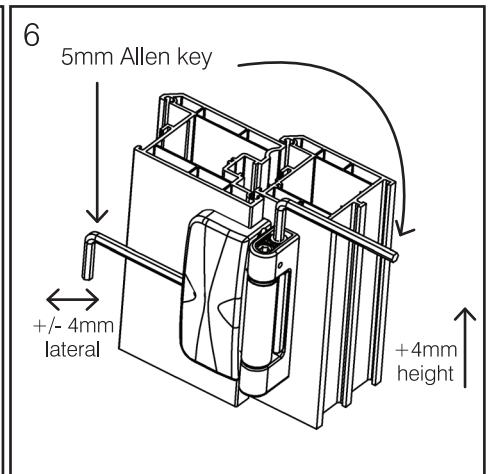
Ensure sash insert (shown above) is orientated correctly - dependent on sash over-rebate height. Recommended screw size is 4.2 x 42mm drill point bugle head (part no. 136630)



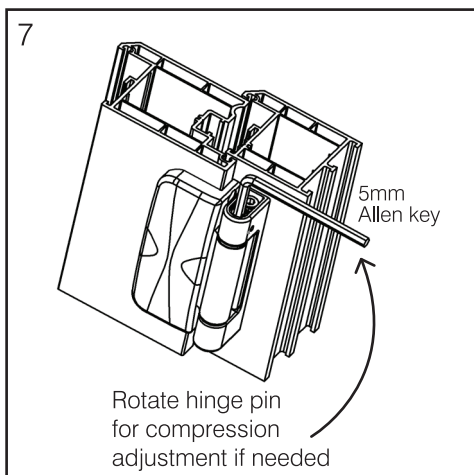
Offer sash to frame and insert hinge pin with datum mark away from sash, as shown above.



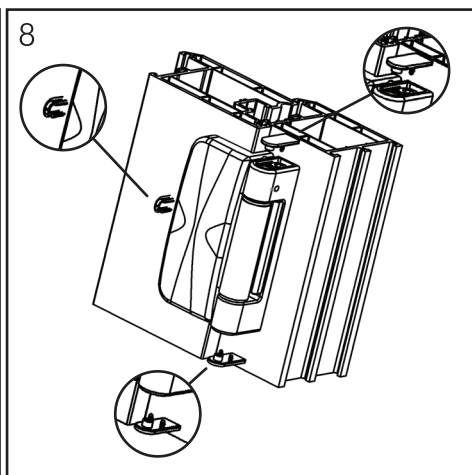
Tighten grub screw onto hinge pin with 2mm Allen key to secure, as shown above.



Adjustment is achieved by inserting a 5mm Allen key, as shown above.



Fine compression adjustment is achieved with a 5mm Allen key and rotating the hinge pin 90 degrees, as shown above.



Press 3 cover caps into position as shown above.

Note. To ensure optimum location of the lateral adjustment screw there may be minimal powder coating around this area on the sash insert. This is quite normal and is not detrimental to the product's performance.

