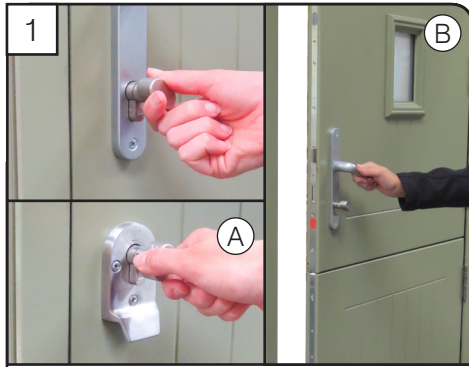
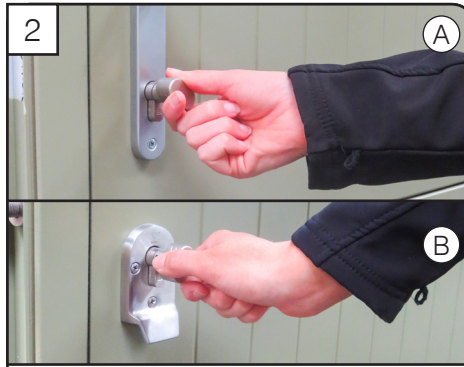


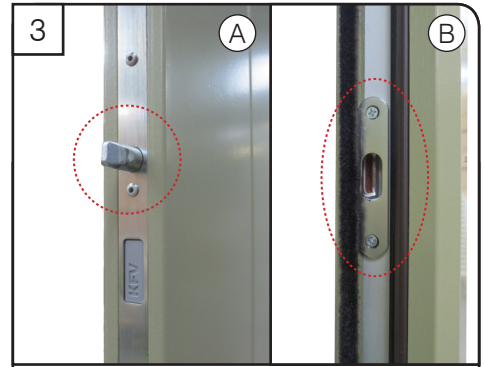
KFV Lock Stable Door - Operating Instructions



1
TO CLOSE :- With the doors in the open position, fix together holding the doors together and turn the cylinder thumb turn (inside) or the key (outside) on door 'A'. This will engage both doors together and can now be closed as one door on the top latch.



2
TO LOCK and secure the door turn the cylinder thumb turns (inside) or key (outside) to the top and bottom door.



3
The shoot bolts and deadbolts 'A' will engage into the strikers 'B'. The door is now fully locked.



4
To open the top door only from the inside or outside turn the cylinder with thumb turn or key on the top door 'A'. Dead bolt and shoot bolt disengage from the strikers 'B'



5
Latch can be retracted by handle or cylinder to release the top door.



6
To open both the top and bottom doors from the inside or outside; turn the cylinder on both doors. The deadbolts and shootbolt disengage from strikers.



7
Latch on top door can be retracted by handle or cylinder to release the combined door.